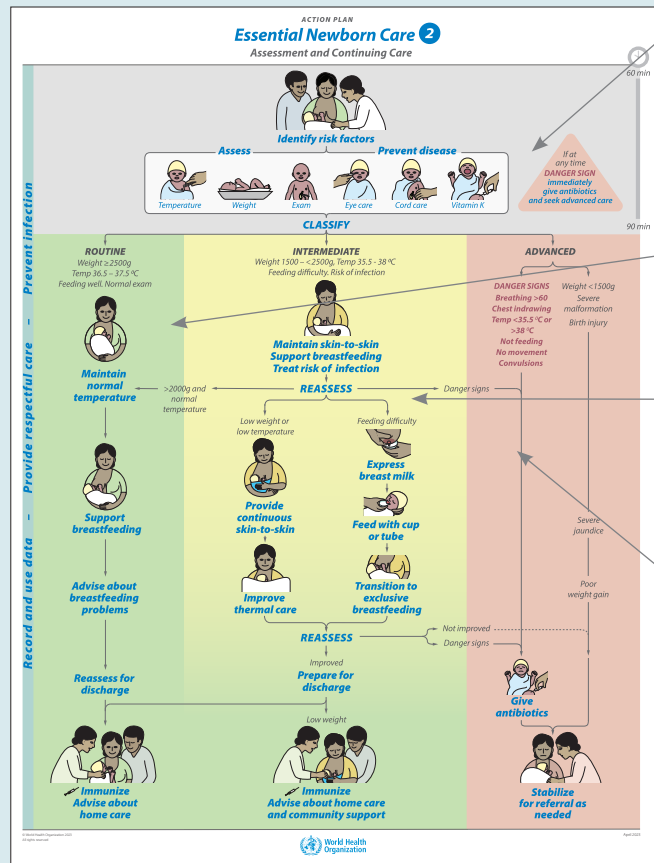


# Key updates to Essential Newborn Care 2

The WHO ENC course incorporates all content of the Helping Babies Survive courses, updated to align with WHO recommendations and guidelines.

**ENC 2 - Assessment and Continuing Care** is the second part of the WHO ENC Basic Course. This is an updated version of Essential Care for Every Baby (ECEB) and Essential Care for Small Babies (ECSB) combined, focusing on care from 60 minutes after birth to discharge.

## ENC 2 Action Plan



### Grey zone

- Graphic includes addition of birth companion and healthcare provider – highlights this course has a family-centered focus and acknowledges the important role of the provider
- Risk factors are included with assessment findings to classify and make a plan of care
- Vitamin K dosage guidance is 1mg – simplified, no longer weight dependent
- Recognition of Danger Signs can occur at any time after birth
- Action Plan begins at 60 minutes after birth – ENC 1 covers first hour

### Green zone

- Routine care eligibility criteria include weight, temperature, feeding behavior, assessment findings, and risk factors
- Reassess for discharge emphasizes use of discharge criteria
- Advise about home care emphasizes making links to follow-up care in the home and community

### Yellow zone

- Treat risk of infection highlights that a stable baby with risk for infection can be treated with antibiotics without separation from the mother
- Reassess emphasizes repeated cycles of assessment during the facility stay to adjust the treatment plan
- Discharge is based on assessment criteria
- Strengthened family preparation for discharge and links to follow-up care in the community are essential after intermediate care

### Red zone

- Antibiotic administration is linked with core Danger Signs to avoid over-use
- Temperature changed to >38.0 rather than >37.5 as a Danger Sign to better correlate with risk of infection

### Cross-cutting themes

- ECEB + ECSB steps combined into one course and Action Plan
- Addition of "Record and use data," "Provide respectful care," and "Prevent infection" on left side of Action Plan – call attention to essential activities that health care providers must think about during every action step
- Link graphics added to action steps involving the mother – these highlight the companion maternal care courses