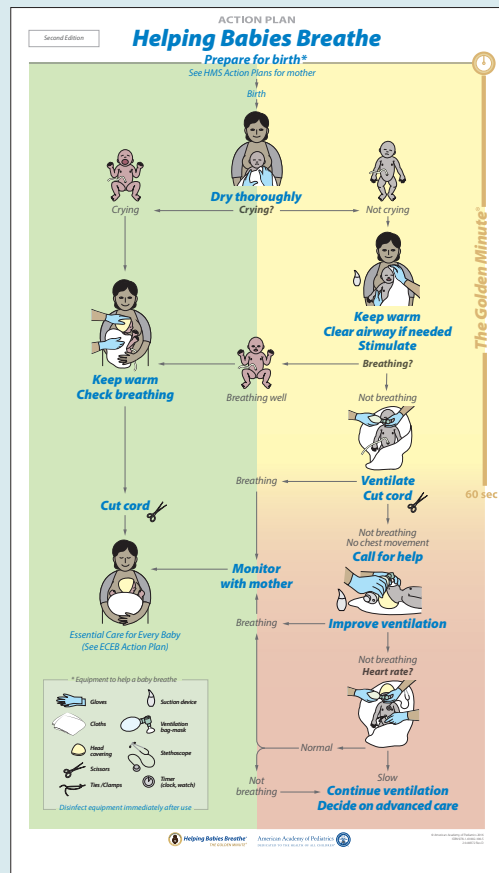


# Key updates to Essential Newborn Care 1

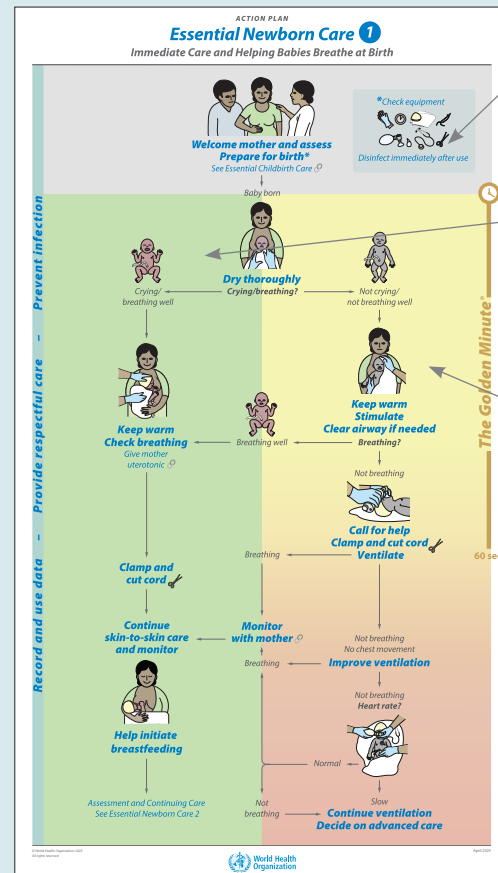
The WHO ENC course incorporates all content of the Helping Babies Survive courses, updated to align with WHO recommendations and guidelines.

ENC 1 - Immediate Care and Helping Babies Breathe at Birth is the first part of the WHO ENC Basic Course. This is an updated version of Helping Babies Breathe (HBB), and focuses on essential newborn care from birth to 60 minutes after birth.

## HBB 2nd Edition Action Plan



## ENC 1 Action Plan



### Grey zone

- Graphic includes addition of birth companion and healthcare provider – highlights this course has a family-centered focus and acknowledges the important role of the provider
- Equipment list graphic moved to the top of the Action Plan – emphasizes the importance of being prepared for birth

### Green zone

- Addition of “breathing well” to harmonize with WHO recommendations
- Addition of “Give mother uterotonic” – acknowledges that often a single provider is taking care of mother and baby
- Addition of “Continue skin-to-skin care” and “Help initiate breastfeeding” – the Green Zone now encompasses the full hour after birth

### Yellow zone (The Golden Minute)

- Assessment of crying and breathing – addition of “not breathing well” to harmonize with WHO recommendations
- “Keep warm, Stimulate, Clear airway if needed” – deliberately moved “clear airway” to last position to remind providers that suctioning is only needed in certain circumstances
- “Call for help” – moved to yellow zone to help ensure support arrives sooner
- “Clamp and cut cord, Ventilate” – adjusted the order of these actions to align with WHO guidelines

### Cross-cutting themes

- Addition of “Record and use data,” “Provide respectful care,” and “Prevent infection” on left side of Action Plan – call attention to essential activities that health care providers must think about during every action step
- Link graphics added to action steps involving the mother – these highlight the companion maternal care courses